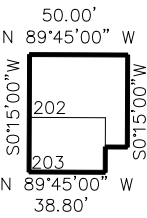


PART OF THE NE.1/4Z, OF SECTION 32, T.7N., R.1W., S.L.B. & M.
NORTH OGDEN BUSINESS CENTER PH 1 FIRST AMD
an EXPANDABLE CONDOMINIUM PROJECT

TAXING UNIT: 503

IN NORTH OGDEN CITY
SCALE 1" = 40'

SEE PAGE 45



| BUILDING | UNIT | SERIAL NUMBER | SQ FT | OWNERSHIP |
|----------|------|---------------|-------------|----------------------|
| 2 | 202 | 181430001 | 1,770 SQ FT | 2274 WASHINGTON, LLC |
| | 203 | 181430002 | 1,030 SQ FT | RHRE 19 LLC |

SEE PAGE 45

10' UTILITY & DRAINAGE EASEMENTS EACH
SIDE OF PROPERTY LINES AS INDICATED
BY DASHED LINES EXCEPT AS OTHERWISE
SHOWN.

FOR COMPLETE ENG DATA SEE
ORIGINAL DEDICATION PLAT IN
BOOK 74, PAGES 71 & 72 OF RECORDS.